



Meetings / Destination / Southern California / Beach

Crowne Plaza Redondo Beach and Marina Hotel

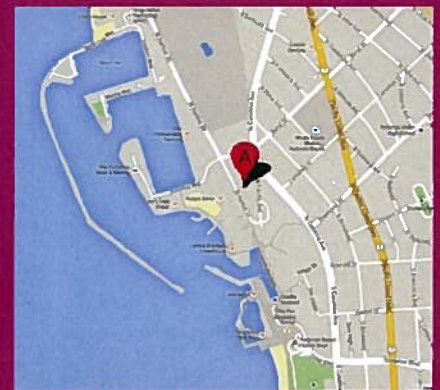
Located facing onto the southern California's Pacific Ocean, the New Crowne Plaza Redondo Beach & Marina Hotel is the ideal meeting destination for small intimate corporate groups to large annual destination conventions. Enjoy the sand, surf, and shopping of Los Angeles' South Bay affordable destination - Redondo Beach.

MEETINGS BY THE NUMBERS

- ★ 20,000 sq ft NEW meeting space all on lobby level.
- ★ 342 Guest rooms and suites with city, marina, pool and ocean views.
- ★ 98.8% Meeting Satisfaction.
- ★ \$22M Renovation of meeting space, guest rooms, and lobby in past year.
- ★ 7 - Miles south of LAX airport.
- ★ 2 Hour RFP response time.

GUEST & MEETING AMENITIES

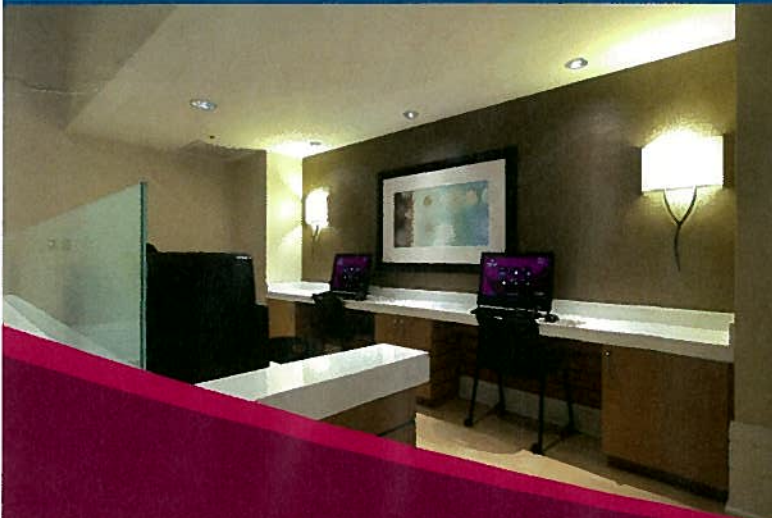
- ★ Dedicated Crowne Meeting Director - CMP. Experienced & professional from start to finish.
- ★ 15 restaurants within a 5 minute walk.
- ★ Onsite AV services are convenient for anything last minute.
- ★ European Day Spa - massage and facials.
- ★ Pool, tennis court, whirlpool, fitness center.
- ★ Bikes for beach cruising.





CROWNE PLAZA

REDONDO BEACH AND MARINA





CROWNE PLAZA®
REDONDO BEACH AND MARINA

Top 10 things to enjoy while in beautiful Redondo Beach

The CP Hotel Offers:

- Breathtaking **Pool Deck, Jacuzzi** and Tennis Courts on the 2nd Floor
- Walking Map** of our RB Pier and restaurants at our Concierge area
- BODY ETC.** - Spa on our 2nd Floor
- Our **Splash Bistro, Lounge & Patio** for all meals!



- Historic Redondo Beach Pier** (as seen above), beautiful at all hours. (only one block South.)
- Our **Marina City** at www.visitredondo.com and ask for our free walking map & ideas with Concierge(Day- Bike Rentals, Boat Excursions, Jet Skis etc.)



Shopping & getting a little further away....

- Comedy & Magic Club /Hermosa Bch** – 2 miles
- ~~Free Shuttle to Del Amo Fashion Mall and Theater~~
- Miles of V.I.P. **Bike Paths** and Jogging Trails (See concierge for Bike Rentals)
- Trump National Golf/Palos Verdes Cliffs (20 min)
- Disneyland
- TheGetty (35 min.)

